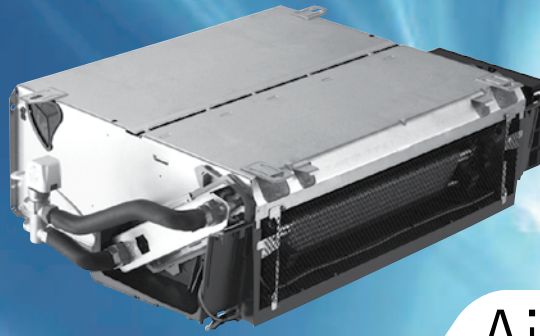


ROOM FAN COIL UNITS



Air treatment

42N

IDROFAN

Accessories

- Supporting feet
- Supporting feet and cover panel
- Return air grille for cabinet unit
- Rear closing panel
- Cabinet on concealed units,
- Discharge air sleeve (concealed units only)
- Supporting brackets
- A and B-type thermostats
- Special installation kit
- Cold draught prevention kit - all two-pipe sizes
- Automatic changeover switch
- Air sensor with 15 m cable
- Water sensor kit with 15 m cable
- Infrared remote controller and infrared remote receiver kit
- ZUI1 or ZUI2 interface
- SUI1 or SUI2 (with/without fan speed selection)

Features

- Eleven sizes with two-pipe, two-pipe changeover or four-pipe coils, with an air flow range from 35 to 422 l/s, a cooling capacity range from 0.8 to 6.4 kW, and a heating capacity range from 1.1 to 9.5 kW.
- The 42N_S is available with a new-generation three- or five-speed AC motor. The 42N_E is available with a variable-speed low energy consumption EC motor.
- Concealed or cabinet chilled-water fan coil system, designed for vertical and horizontal installation in a room or above a false ceiling.
- Economical cooling and heating for hotels, commercial and residential applications.
- Cabinet version complete with control terminal.
- Combines aesthetic slim-line design with high installation flexibility.
- Two fan types, a tangential fan for ultra-low noise level and a centrifugal fan for high air distribution system compatibility.
- Factory-mounted PTC electric heater with low and high capacity settings.
- Low hydraulic pressure drop with a valve mounted.
- Quick installation with factory-mounted options (controls, valves).
- LEC models enhance unit performance offering reduced energy costs, improved comfort, maximum flexibility and extended operating life.

Standard controls

Electronic thermostat

- Two versions, A and B, with potentiometer
- Automatic or manual three-speed selection
- Automatic or manual change-over
- Electric heat control
- Comfort/economy/frost protection modes

HDB controller

- Digital display or infra-red terminal
- Unit grouping capability
- Adjustable settings and parameters
- Timer and daily scheduling

NTC communicating controller

- Network communication
- Aquasmart Evolution system compatible
- IAQ and DCV management
- Motorised blinds & lighting control



Physical and electrical data, units with AC motors

42N_S, 2-pipe coil	15					20					26			
Fan speed	5	4	3	2	1	5	4	3	2	1	3	2	1	
Fan type	One, tangential					One, centrifugal					One, centrifugal			
Air flow	l/s-m ³ /h	35-125	56-200	69-250	84-300	97-350	59-215	80-285	92-330	107-385	128-460	93-335	149-536	196-706
Cooling mode*														
Total cooling capacity	kW	0.83	1.07	1.19	1.34	1.49	1.39	1.81	2.08	2.34	2.54	2.10	3.00	3.60
Sensible cooling capacity	kW	0.70	0.93	1.03	1.19	1.31	1.03	1.42	1.60	1.85	2.03	1.65	2.35	2.90
Water flow rate	l/s-l/h	0.04-143	0.05-184	0.06-205	0.06-230	0.07-256	0.07-239	0.09-311	0.10-358	0.11-402	0.12-437	0.10-361	0.14-516	0.17-619
Water pressure drop	kPa	6.2	9.6	11.5	14.1	16.9	2.8	4.2	5.3	6.4	7.3	5.4	9.5	12.7
Heating mode**														
Heating capacity	kW	1.14	1.42	1.66	1.89	2.09	1.70	2.10	2.54	2.87	3.18	2.56	3.68	4.38
Water pressure drop	kPa	4.9	7.8	9.4	11.6	14.0	2.2	3.4	4.3	5.2	6.0	4.4	7.8	10.6
Sound power/sound pressure***	dB(A)	28/19	37/28	42/33	47/38	51/42	29/20	38/29	42/33	46/37	50/41	44/35	54/45	61/52
Electrical data														
Power input	W	16	17	19	23	30	29	30	31	34	36	45	55	65
Current drawn	A	0.08	0.08	0.09	0.11	0.13	0.13	0.13	0.14	0.15	0.16	0.21	0.25	0.30
Electric heater (high/low capacity)		800/500 W, 3.48/2.18 A					1000/500 W, 4.35/2.18 A					1000/500 W, 4.35/2.18 A		
Eurovent energy class FCEER/FCCOP		D/D					D/E					E/E		

42N_S, 2-pipe coil	30					42			45					65			
Fan speed	5	4	3	2	1	3	2	1	5	4	3	2	1	3	2	1	
Fan type	Two, centrifugal					Two, centrifugal			Two, centrifugal					Two, centrifugal			
Air flow	l/s-m ³ /h	97-350	126-455	153-550	182-655	207-745	147-531	222-798	268-965	146-525	185-665	224-805	277-995	333-1195	237-853	331-1191	422-1519
Cooling mode*																	
Total cooling capacity	kW	2.07	2.54	3.01	3.46	3.70	3.00	4.00	4.50	2.60	3.37	3.98	4.74	5.45	3.90	5.45	6.35
Sensible cooling capacity	kW	1.40	1.96	2.35	2.84	3.10	2.35	3.30	3.85	2.12	2.78	3.30	3.98	4.55	3.20	4.6	5.10
Water flow rate	l/s-l/h	0.10-356	0.12-437	0.14-518	0.17-595	0.18-636	0.14-516	0.19-688	0.22-774	0.12-447	0.16-580	0.19-695	0.23-815	0.26-937	0.19-671	0.26-937	0.30-1092
Water pressure drop	kPa	6.0	8.6	11.5	14.6	16.4	11.4	18.8	23.0	3.2	5.0	6.7	9.0	11.5	6.4	11.5	15.0
Heating mode**																	
Heating capacity	kW	2.86	3.54	4.18	4.80	5.29	4.05	5.55	6.40	4.00	5.05	5.90	6.90	8.08	6.10	8.00	9.50
Water pressure drop	kPa	4.8	6.9	9.2	11.7	13.1	9.2	15.0	18.4	2.7	4.2	5.5	7.5	9.5	5.4	9.5	12.3
Water content	l	1.8	1.8	1.8	1.8	1.8	1.8	1.8	1.8	2.1	2.1	2.1	2.1	2.1	2.1	2.1	2.1
Sound power/sound pressure***	dB(A)	36/27	42/33	47/38	51/42	54/45	47/38	57/48	62/53	41/32	47/38	53/44	57/48	62/53	54/45	62/53	68/59
Electrical data																	
Power input	W	42	44	46	50	57	45	75	100	69	77	83	92	128	90	125	165
Current drawn	A	0.19	0.20	0.21	0.23	0.25	0.21	0.35	0.45	0.31	0.34	0.37	0.41	0.55	0.41	0.55	0.72
Electric heater (high/low capacity)		2000/1000 W, 8.70/4.35 A					2000/1000 W, 8.70/4.35 A			2000/1000 W, 8.70/4.35 A					2000/1000 W, 8.70/4.35 A		
Eurovent energy class FCEER/FCCOP		D/D					D/D			E/E					E/E		

Physical and electrical data, units with LEC motors

42N_E, 2-pipe coil	19					29					39					49					
Fan speed	%	20	40	60	80	100	20	40	60	80	100	20	40	60	80	100	20	40	60	80	100
Fan type	One, tangential					One, centrifugal					Two, centrifugal					Two, centrifugal					
Air flow	l/s	35	56	69	84	97	59	80	92	107	128	97	126	153	182	207	146	185	224	277	333
	m ³ /h	125	200	250	300	350	215	285	330	385	460	350	455	550	655	745	525	665	805	995	1195
Cooling mode*																					
Total cooling capacity	kW	0.83	1.07	1.19	1.34	1.49	1.39	1.81	2.08	2.34	2.54	2.07	2.54	3.01	3.46	3.70	2.60	3.37	3.98	4.74	5.45
Sensible cooling capacity	kW	0.70	0.93	1.03	1.19	1.31	1.03	1.42	1.60	1.85	2.03	1.40	1.96	2.35	2.84	3.10	2.12	2.78	3.30	3.98	4.55
Water flow rate	l/s	0.04	0.05	0.06	0.06	0.07	0.07	0.09	0.10	0.11	0.12	0.10	0.12	0.14	0.17	0.18	0.12	0.16	0.19	0.23	0.26
	l/h	143	184	205	230	256	239	311	358	402	437	356	437	518	595	636	447	580	685	815	937
Water pressure drop	kPa	6.2	9.6	11.5	14.1	16.9	2.8	4.2	5.3	6.4	7.3	6.0	8.6	11.5	14.6	16.4	3.2	5.0	6.7	9.0	11.5
Heating mode**																					
Heating capacity	kW	1.14	1.42	1.66	1.89	2.09	1.70	2.10	2.54	2.87	3.18	2.86	3.54	4.18	4.80	5.29	4.00	5.05	5.90	6.90	8.08
Water pressure drop	kPa	4.9	7.8	9.4	11.6	14.0	2.2	3.4	4.3	5.2	6.0	4.8	6.9	9.2	11.7	13.1	2.7	4.2	5.5	7.5	9.5
Sound power/sound pressure***	dB(A)	28/19	37/28	42/33	47/38	51/42	29/20	38/29	42/33	46/37	50/41	36/27	42/33	47/38	51/42	54/45	41/32	47/38	53/44	57/48	62/53
Electrical data																					
Power input	W	3	4	7	10	14	3	5	7	10	15	5	9	15	23	35	8	14	25	39	65
Current drawn	A	0.08	0.09	0.10	0.11	0.15	0.09	0.09	0.11	0.13	0.16	0.10	0.12	0.16	0.21	0.29	0.10	0.15	0.22	0.35	0.52
Electric heater (high/low capacity)		800/500 W, 3.48/2.18 A					100/500 W, 4.35/2.18 A					2000/1000 W, 8.70/4.35 A					2000/1000 W, 8.70/4.35 A				
Eurovent energy class FCEER/FCCOP		A/A					A/A					A/A					A/A				

* Eurovent conditions: Entering air temperature = 27°C db/19°C wb - entering/leaving water temperature = 7°C/12°C, high fan speed.

** Eurovent conditions: Entering air temperature = 20°C, entering water temperature = 50°C, same water flow rate as in cooling mode.

*** Based on a hypothetical acoustic attenuation for the room and the air distribution system of -9 dB(A).

Note: For data on 4-pipe coils please refer to the specific product documentation.

Dimensions and weights

	Vertical units with cabinet				Horizontal units with cabinet				Horizontal concealed units				Vertical concealed units				
	S15	S20-26	S30-42	S45-65	S15	S20-26	S30-42	S45-65	S15	S20-26	S30-42	S45-65	S15	S20-26	S30-42	S45-65	
	E19	E29	E39	E49	E19	E29	E39	E49	E19	E29	E39	E49	E19	E29	E39	E49	
Length	mm	830	1030	1230	1430	830	1030	1230	1430	606	806	1006	1206	606	806	1006	1206
Width	mm	220	220	220	220	657	657	657	657	518	518	518	518	220	220	220	220
Height	mm	657	657	657	657	220	220	220	220	220	220	220	220	640	640	640	640
Weight	kg	17	19	22	35	17	19	22	35	13	15	16	28	13	15	16	28