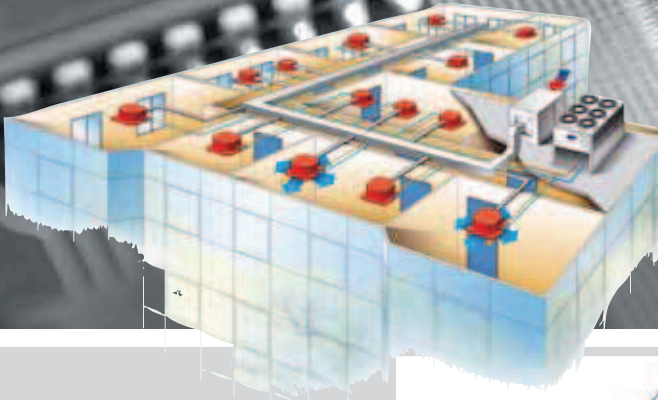


# AQUASMART EVOLUTION

FEATURING THE NEW TOUCH PILOT SYSTEM MANAGER



## Controls

## Aquasmart



### Description

- Aquasmart Evolution is a complete hydronic heating, ventilating and air conditioning (HVAC) system ideal for residential and light commercial applications from offices, commerce to hotels and hospitals. It offers perfect comfort for building occupants whilst optimising economical operation for applications up to 2500 m<sup>2</sup>. Larger installations with multiple systems can be managed and integrated within a single Building Management solution thanks to the new BACnet option capability (available as option in 2012).
- An Aquasmart system consists of up to 128 terminal fan coil units, served by up to two chillers or heat pumps (master-slave), to supply cooling and/or heating to occupied spaces and fresh air handling units. The system manager can fully integrate and control up to eight Carrier fresh air handling units\* (39SQ). Each fresh air plant can be associated with specific terminal fan coils and/or zones for optimum building use management with occupancy, controlling and minimising energy use.
- Individual schedules can be set up and managed for each and all air treatment plants. The Aquasmart System Manager supplies building information enabling dynamic and precise control of the 39SQ's night-time free-cooling feature to further reduce building energy consumption.

\* If air treatment unit is not supplied by Carrier, integration is limited to control via a digital output for the main fresh-air unit.

### Features

- The Aquasmart Evolution system ensures significant energy savings combined with optimised user comfort by managing building zoning, occupancy and room temperatures in accordance with needs.
- Terminal fan coil units can be organised in up to 32 zones to optimise building management by zone requirement and according to building design conditions.
- The Touch Pilot System Manager – the brain and building user interface – was designed to facilitate use and allow rapid access to manage and configure system operation to maximise energy savings at comfort conditions.
- System components are fitted with communicating controls allowing the System Manager to communicate with and obtain feedback on user needs and operation. Based on the system requirements the System Manager coordinates the system heating and cooling modes for maximum comfort and optimal energy consumption, respecting the comfort parameters and occupancy schedules for the building zones.
- The Aquasmart system offers affordable building HVAC system management featuring capabilities usually only available in more expensive solutions and requiring additional building-by-building programming development.

TOUCH  
Pilot



## System design layout and configuration guide

- The System Manager is connected to the system components via a communication bus, and allows control of all system and individual terminal operating parameters.
- System configuration is simple through easily accessible menus. Unit grouping is managed by the network and requires no specific wiring to allow easy reconfiguration to suit later building layout modifications.
- The Aquasmart Evolution components are delivered complete, configured and factory-tested.

## Energy savings

- The Aquasmart system controls offer superior comfort levels. By optimising and controlling the system components building owners and occupants can save energy and reduce their energy bill, contributing to a reduction in building carbon emissions.
- System control saving possibilities are further enhanced with a range of significant energy-saving features available at equipment level, such as the 39SQ plug-and-play fresh air handling unit with heat recovery technology, the use of reversible 30RQ air-to-water heat pumps for space heating, 61AF heat pumps for domestic hot water and a range of fan coil units with EC motor technology and variable fan speed control.
- Energy simulations conducted with a recognised software simulation program indicate that Aquasmart can achieve energy savings over a traditional non-communicating and non-optimised system. Case studies indicate that savings of 25% and beyond are possible. Each project merits its own assessment of the opportunities.



## New System Manager

- The Touch Pilot system manager is the user interface and allows building managers to control the Aquasmart system and associated components and features.
  - Intuitive colour touch screen.
  - A system set-up wizard leads installers through a number of easy intuitive steps to identify and configure the system and manage system set-up, operation and maintenance.
  - Icon-driven menus easily and rapidly manage and maintain the HVAC system.
  - Management of system parameters including cooling and heating set points (terminals and cooling and/or heating plants) and occupied and non-occupied periods.
  - Optimisation of energy consumption, monitoring of component operation and reporting of system faults.
  - Management of occupied/unoccupied time schedules and smart start features to ensure that comfort requirements are met from the very beginning of the occupied period.
- The System Manager is compatible with a web browser, allowing user access to the system from a remote location such as a maintenance office within the building or from an off-site location where internet access is available. This facilitates ease-of-access and use and allows service and maintenance companies to offer remote service coverage without visiting the site, thus reducing carbon emissions due to transport.
- The availability of a new Carrier Apple application (HVAC smart browser) extends the accessibility to smart phones and tablets.

## System selection

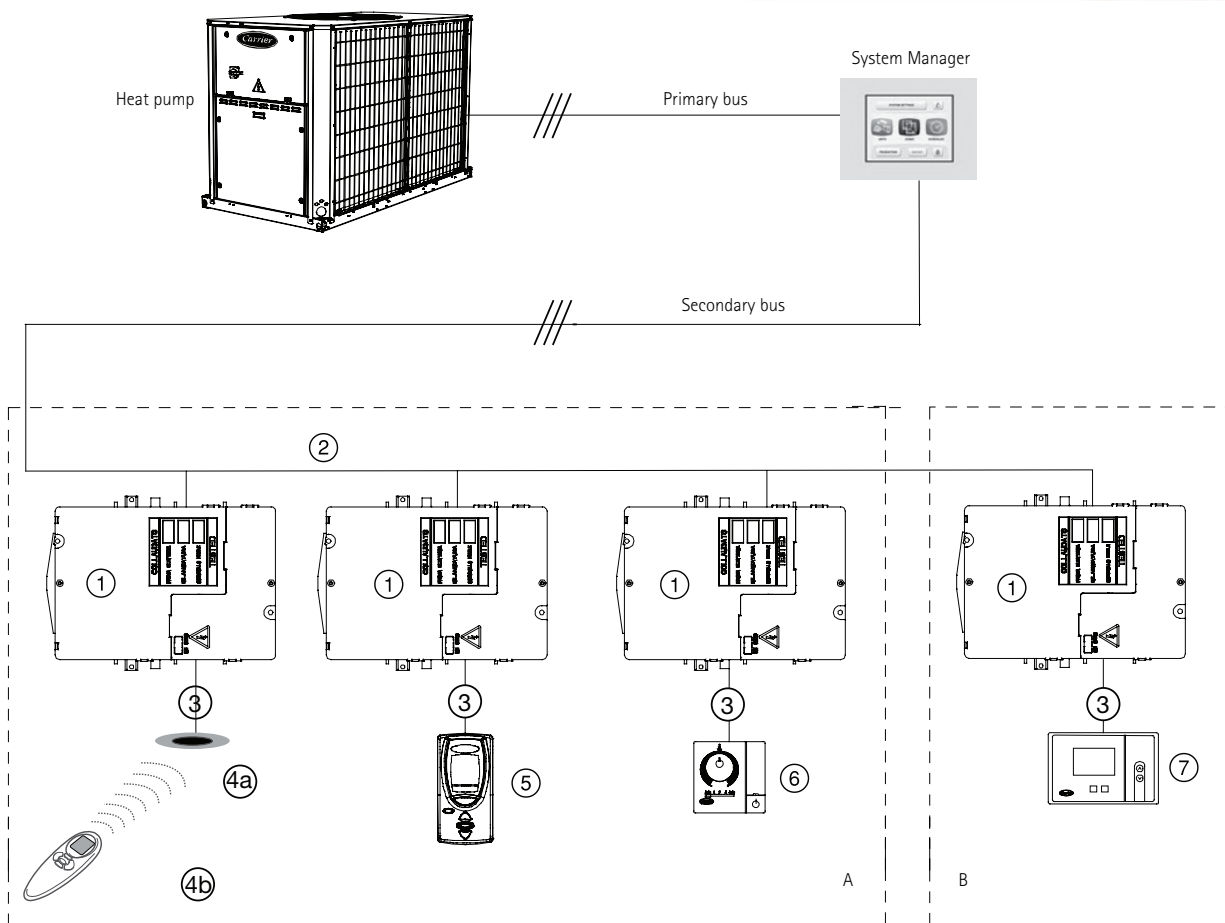
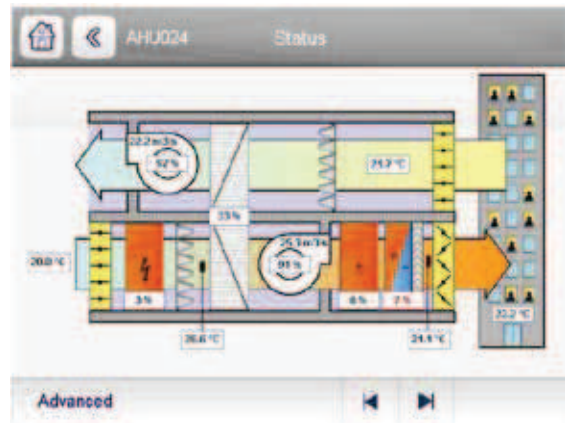
- The Aquasmart system is easy to select and configure with all units supplied from the factory with pre-installed, pre-configured and pre-tested controls and valves. The installer only needs to adjust the system parameters to the local building or application needs - a task made even easier with the New System Manager.
- Carrier has created a Quick Selection Guide that is available to rapidly identify and select the system components, facilitating the design process and saving time for designers and installers alike.
- Please contact your local sales office for a copy of this guide.





## Latest features for 2012

- The latest release of the Aquasmart Touch Pilot system manager enhances the capabilities to integrate Aquasmart systems with Carrier or third-party building management system front-end software. The new BACnet option allows access to read and read/write system parameters from the building management system facilitating integration of Aquasmart within the overall building management.



- Legend:**
- ① NTC controller
  - ② Secondary communication bus
  - ③ User interface connection
  - ④ Infrared controller IR2
  - ⑤ ZUI2

- ⑥ SUI
- ⑦ CRC2
- A Room A
- B Room B